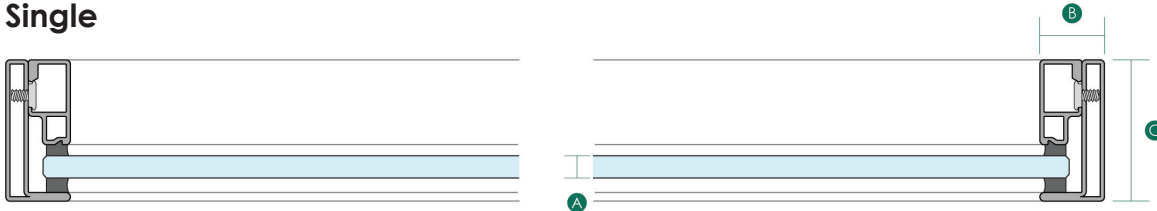
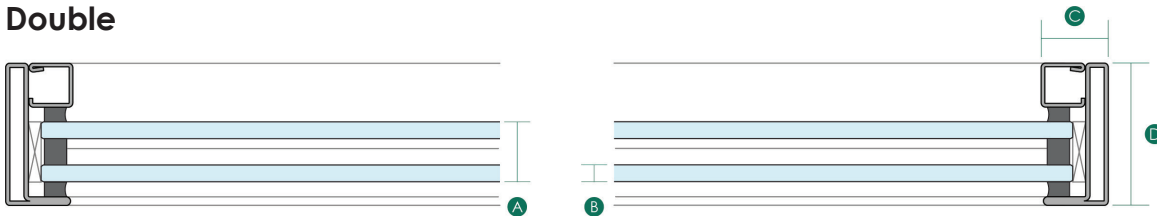


# BYV50/60

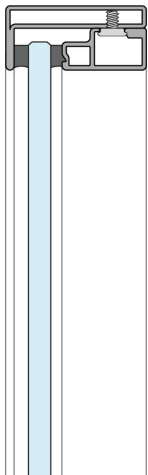
## Single



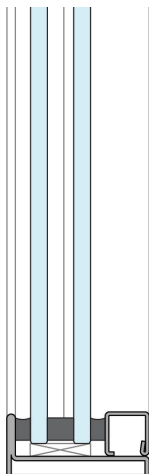
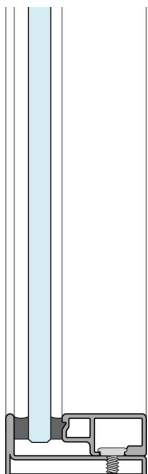
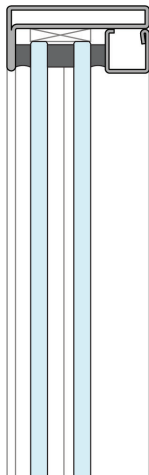
## Double



## Single



## Double



## Dimensions & main components

|   | Single | Double  |
|---|--------|---------|
| A | 6-12mm | 16-25mm |
| B | 23mm   | 6-12mm  |
| C | 50mm   | 23mm    |
| D |        | 50mm    |

## Description

Exceptionally slender profile face widths allow for intricately delicate structures in a timeless design. These elements not only bring in ample natural light but also create a sense of spaciousness with the utmost transparency. You can choose from a wide variety of profiles, enabling the creation of fixed glazing as well as flush and offset doors. Thanks to its unique construction design, these profiles facilitate customisable modular solutions for a wide array of applications. What sets the [Forster Presto XS] BYV 50/60 profiles apart is their construction from 100% steel, without any additional insulators.